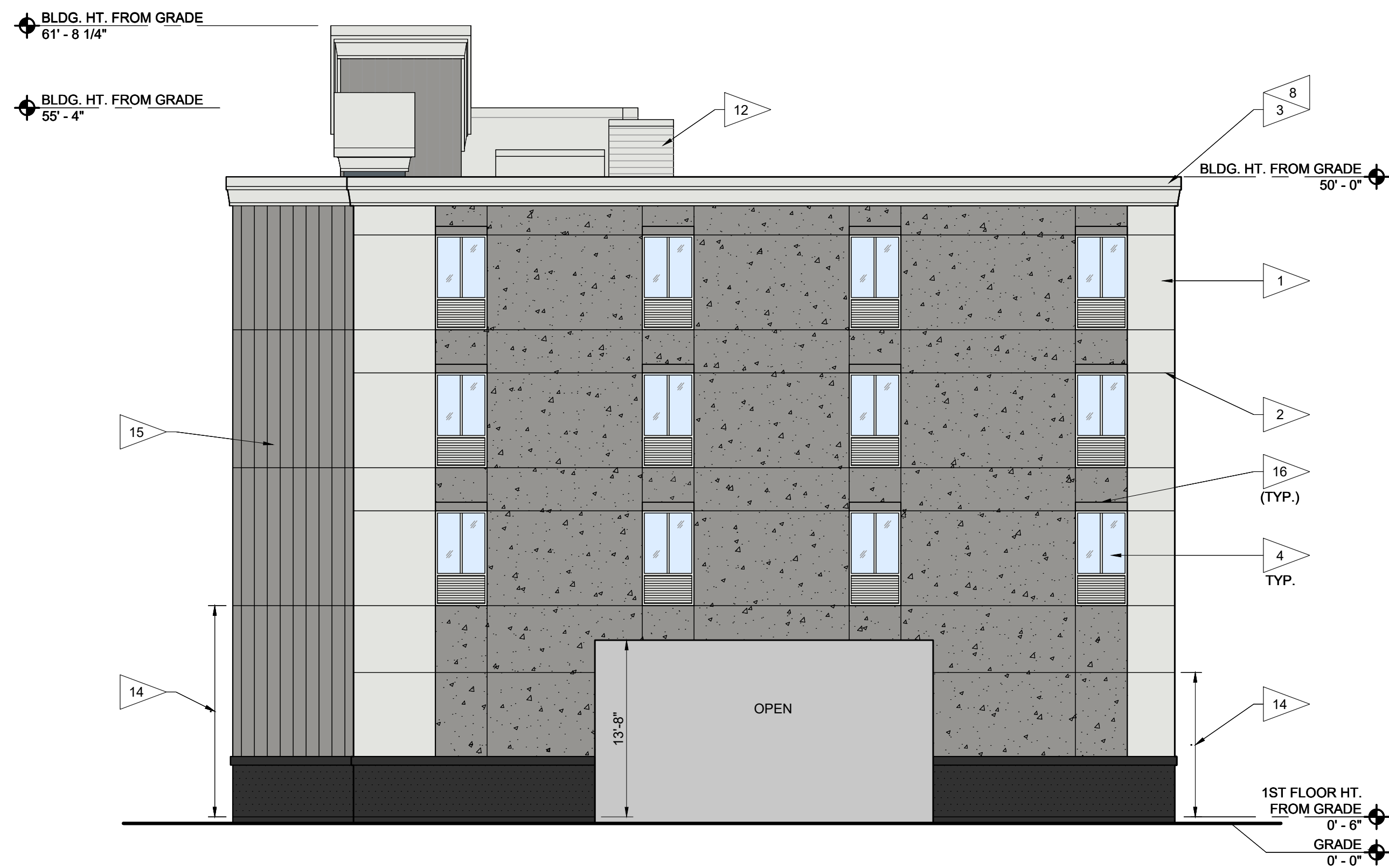




EAST ELEVATION 1  
SCALE: 1/8" = 1'-0"



SOUTH ELEVATION 2  
SCALE: 1/8" = 1'-0"

GENERAL NOTES:	KEY NOTES: XX
1. REFER TO CANDLEWOOD SUITES STANDARDS MANUAL GUIDE FOR ADDITIONAL INFORMATION REGARDING EXTERIOR MATERIALS, CONSTRUCTION REQUIREMENTS AND SIGNAGE REQUIREMENTS.	1. CEMENT STUCCO SYSTEM - SEE FINISH LEGEND FOR COLOR. 2. CONTROL JOINT - LOCATIONS AS SHOWN WITH ADDITIONAL JOINTS IF REQUIRED BY STUCCO SYSTEM. 3. CORNICE BAND - STUCCO PROJECTION. SEE FINISH LEGEND FOR COLOR. 4. INTEGRATED EXTERIOR WINDOW AND PTAC LOUVER - CLEAR ANODIZED COLOR. SEE WINDOW SCHEDULE. 5. ALUMINUM STOREFRONT - CLEAR ANODIZED COLOR. SEE WINDOW SCHEDULE. 6. ALUMINUM STOREFRONT (NO GLASS) - CLEAR ANODIZED COLOR. 7. AUTOMATIC ALUMINUM SLIDING DOOR - SEE SCHEDULE. CLEAR ANODIZED COLOR. 8. METAL COPING SYSTEM - MATCH ADJACENT WALL COLOR. 9. ENTRY CANOPY - SEE FINISH LEGEND FOR COLOR. 10. SIGNAGE - COORDINATE COLORS AND DESIGN WITH HOTEL BRAND STANDARDS. 11. ALUMINUM STOREFRONT DOOR - CLEAR ANODIZED COLOR. 12. EQUIPMENT SCREENING PANELS & ACCESS GATE W/ ANCHORAGE & BRACING AS REQUIRED TO WITHSTAND 150 MPH WIND LOAD. COORDINATE MINIMUM HEIGHT W/ EQUIPMENT. 13. FIRE DEPT. ACCESS GATE - PERFORATED STAINLESS STEEL PANELS WITH STAINLESS STEEL FRAMES. 14. ANTI-GRAFFITI SEALANT - PROVIDE ANTI-GRAFFITI COATING ON ALL CEMENT STUCCO FROM BOTTOM TO 1ST CONTROL JOINT (MIN. 10'-0"). 15. STAIR TOWER - EGRESS PATH FROM UPPER FLOORS TO EXTERIOR. 16. SUNSHADE - PREFINISHED ALUMINUM LOUVERED SUNSHADE 24" X WIDTH OF WINDOW. PROVIDE HURRICANE RESISTANT ATTACHMENT FOR 150 MPH WIND SPEED. 17. SECURITY SCREEN PANEL - PREFINISHED POWDER COATED 2"X2" WELDED 10 GA WIRE MESH WELDED INTO A 1-1/4"X1-1/4"X13 GA ANGLE FRAME.
FINISH LEGEND	
<div><div></div><div>P1 - CEMENT STUCCO W/ VERTICAL "V" GROOVES AT 12" O.C. SHERWIN WILLIAMS SUMMIT GRAY - SW 7669</div></div> <div><div></div><div>P2 - CEMENT STUCCO SHERWIN WILLIAMS ICE CUBE - SW 6252</div></div> <div><div></div><div>P3 - CEMENT STUCCO SHERWIN WILLIAMS OUTERSPACE - SW 6251</div></div> <div><div></div><div>P4 - CEMENT STUCCO SHERWIN WILLIAMS SUMMIT GRAY - SW 7669</div></div> <div><div></div><div>P5 - CEMENT STUCCO SHERWIN WILLIAMS CAVIAR - SW 6990</div></div>	

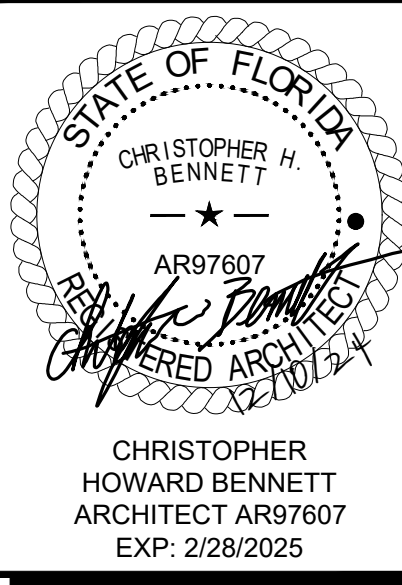
AAC

PZ23-12000045

12/16/2024

JOB NUMBER	22031
ISSUE DATE	12-10-24
REVISIONS	

CDG II, L.L.C. © 2024



CONDO HOTEL  
872 E MCNAB ROAD  
POMPANO BEACH, FLORIDA 33060  
ARCHITECTURE | PLANNING | INTERIOR DESIGN | PROCUREMENT  
CENTRAL DESIGN GROUP II • 3200 PENN TERRACE, SUITE 100 • COLUMBIA, MISSOURI, 65202 • TEL: 573.441.9391



EXTERIOR  
ELEVATIONS  
COLOR  
A7.4